

The  
Stickley  
Museum  
at Craftsman Farms

# 2023 FALL PREVIEW

PLUS THE 2022 CRAFTSMAN GUILD



Shining a light on preservation at Craftsman Farms

## A LETTER FROM VONDA K. GIVENS, EXECUTIVE DIRECTOR

Dear Friends,

When I gaze outside my office window, a bright blue sky and the deep greens of summer fill the view, but inside the office, we have autumn on our minds and are preparing for a busy fall season.

As you'll see in the pages of this Fall Preview, our biggest events of the year—**Member Day** and **The Craftsman Gala**—will take place on **Saturday, October 7**. On this day, Members are invited to join us, on-site or online, for a daytime **"Preservation Celebration"** at Craftsman Farms, followed in the evening by The Craftsman Gala, the museum's most important annual fundraiser. Check pages 2-4 for information and registration details. I hope to see you here!



**Member Day** will focus on all-things preservation at Craftsman Farms, including the recently completed Log House fireplace restoration (the cover photo was taken during re-installation of the fireplace hoods) and the ongoing work to rehabilitate the Annex and restore the Log House kitchen. See pages 9-10 for a complete preservation update from Jonathan Clancy, the museum's Director of Collections and Preservation.

Additionally, through this report, we are happy to share the **2022 Craftsman Guild** (pages 5-6) and acknowledgements of the many generous gifts received by the museum throughout the past year, including an important new endowment established by Board of Trustees President Barbara Weiskittel.



**SAVE THE DATE FOR FARMS AFIELD: DELAWARE'S BRANDYWINE VALLEY,  
WEDNESDAY TO FRIDAY, NOV. 1-3, 2023**

In closing, I want to invite you to join us for our next **Member-exclusive Farms Afield, set for Wed.-Fri., Nov. 1-3, 2023**. We'll soon share details about our visit to Delaware's scenic Brandywine Valley, which will include a day at Winterthur Museum, Garden and Library—whose collection of rare books and manuscripts includes Gustav Stickley's business records—and a visit to the Delaware Art Museum for curator's tours of their renowned Pre-Raphaelites painting collection and the Tate Britain's special exhibition *The Rosettis*.

The Delaware Art Museum is home to the most comprehensive collection of Pre-Raphaelite paintings outside of the United Kingdom and will be the only museum in the United States to host the Tate Britain exhibition after it closes in London.

Please mark the dates on your calendar and meet us in Delaware!

Finally, it is a pleasure to share this report with museum supporters around the country and beyond, and to have an opportunity to express—on behalf of the museum's Board of Trustees, staff, and volunteers—our sincere gratitude for your support of our mission and our daily work to preserve Craftsman Farms and to share the life and legacy of Gustav Stickley.

JOIN US FOR A  
**PRESERVATION  
CELEBRATION!**

SATURDAY, OCTOBER 7, 2023

SATURDAY MORNING  
**MEMBER DAY**

AT THE STICKLEY MUSEUM AT CRAFTSMAN FARMS

SATURDAY EVENING  
**THE CRAFTSMAN GALA**

AT THE MOUNTAIN LAKES CLUB  
MOUNTAIN LAKES, NEW JERSEY

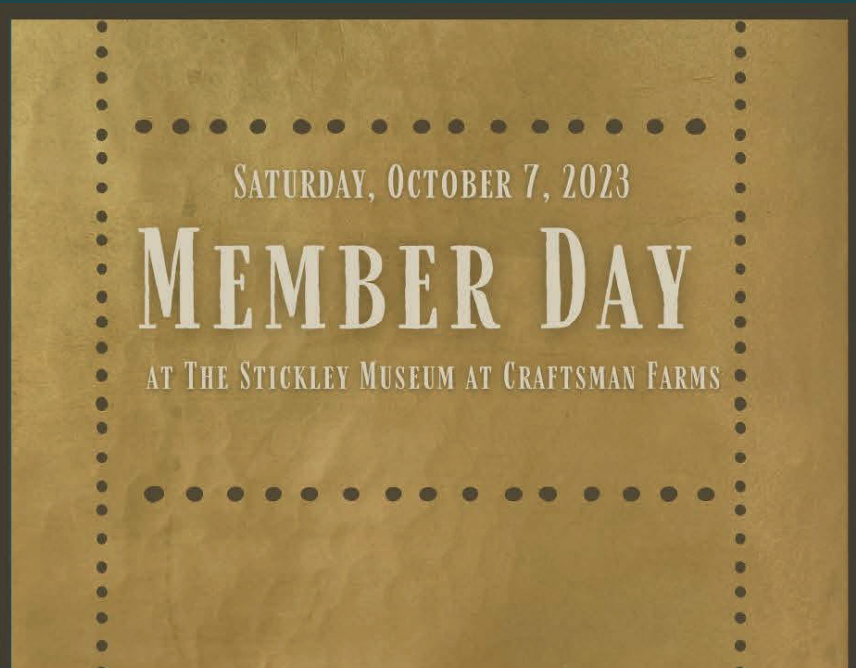
**The Stickley Museum at Craftsman Farms is hosting a special celebration on Saturday, October 7!**

Our celebration will begin with a **Member Day** event spotlighting preservation at Craftsman Farms. For **Member Day**, the museum will suspend regular operations and host a private, in-person event exclusively for Members from 10:00 a.m. to 2:30 p.m. The morning program, from 10:00 a.m. to 12:00 noon EDT, will be available online for Members who are not able to attend in person. During the evening, we'll host The Craftsman Gala, beginning at 6:00 p.m. at the picturesque Mountain Lakes Club in Mountain Lakes, New Jersey (below). Net proceeds from "Preservation Celebration" events support the daily operations of the Stickley Museum at Craftsman Farms. Read on for full details. **We hope you'll be a part of it!**



Photo courtesy of the Mountain Lakes Club

# SPEND THE DAY AT CRAFTSMAN FARMS



**10:00 -11:45 a.m. EDT**

## **Preservation at Craftsman Farms Program & Panel Discussion, In Person at the SMCF and Online**

We'll kick off Saturday with Member Day at the museum. Members will explore all-things preservation at Craftsman Farms. Our morning program, offered on-site (with a light breakfast reception) and online, will feature current, ongoing, and upcoming preservation projects at Craftsman Farms (see pages 9-10 for the latest news), from the ongoing Annex rehabilitation and Log House Kitchen restoration to the upcoming second phase of the White Cottage stabilization, and the restoration of exterior log ends on the Log House. Our day will begin with an overview of preservation across the property and a panel discussion with members of the museum's preservation team, featuring **Eric Holtermann and Kurt Leasure of HMR Architects, Glenn Ceponis of the New Jersey Historic Trust, Jack Apgott of Nickles Contracting, Jonathan Clancy, the museum's Director of Collections and Preservation, and Executive Director Vonda Givens.**

**12:00-2:00 p.m.**

## **Preservation Open House and Lunch at Craftsman Farms**

Following the panel discussion, we'll switch to an in-person-only event. With regular tours suspended for the day, Members will be invited to explore the museum's recently completed, ongoing, and upcoming preservation projects at their own pace. We'll host an open house in the North Cottage, the Log House, and the Stickley Museum Library, and tours of the Annex and Log House Kitchen.

Lunch (included in fees) will feature a delicious taste of New Jersey, spotlighting pie—pizza, that is! Pie Oh My's slice truck will park at Craftsman Farms and offer handcrafted, brick-oven pizza, including regional specialties and Italian ices, to our guests for the day.

**To provide attending Members with a day of unique access, space will be limited for the on-site program. Please reserve your spot early.**

## **Member Day In-person at the Stickley Museum at Craftsman Farms**

**10:00 a.m. to 2:30 p.m.**

**\$90 per person**

Fees include the in-person Program & Panel Discussion, the campus-wide activities, light breakfast, and Pie Oh My pizza lunch. See next page for Full Day Event Packages, including Craftsman Gala tickets.

## **Member Day Online Only**

**10:00 a.m. to 12:00 noon EDT**

**\$25 per person**

**To register for Member Day,  
visit [StickleyMuseum.org](https://StickleyMuseum.org)**

**NOT A MEMBER? JOIN TODAY AT [STICKLEYMUSEUM.ORG/SUPPORT](https://StickleyMuseum.org/support) AND ENJOY ALL OF THE BENEFITS OF MEMBERSHIP!**

# THE BOARD OF TRUSTEES INVITES YOU TO THE CRAFTSMAN GALA

AT THE MOUNTAIN LAKES CLUB, MOUNTAIN LAKES, NEW JERSEY

IN-PERSON ONLY  
BEGINNING AT 6:00 P.M.

The Craftsman Gala, the museum's largest annual fundraiser, returns to the lovely Mountain Lakes Club overlooking beautiful Mountain Lake. The evening will feature a silent auction, live auction, and the museum's highly-anticipated annual reverse auction, led by longtime friend of the museum, John Walcher, Vice President and Senior Specialist at Toomey & Co. Auctioneers. Enjoy drinks and dinner, amid the fellowship of friends old and new, while raising funds to support the daily operations of the museum.

## TICKETS FOR THE CRAFTSMAN GALA ONLY

<b>\$250 Patron Ticket</b>	<b>\$500 Sponsor Ticket</b>
<b>\$1,000 Benefactor Ticket</b>	<b>\$3,500 Benefactor Table (8 Tickets)</b>
<b>\$5,000 Silver Table (8 tickets)</b>	<b>\$10,000 Gold Table (8 Tickets)</b>

## FULL EVENT PACKAGES: MEMBER DAY + THE CRAFTSMAN GALA

Enjoy our full in-person Preservation Celebration for one price! This ticket includes the Member Day event from 10:30 a.m. to 2:30 p.m. at the Stickley Museum at Craftsman Farms and a Sponsor or Benefactor-level ticket to The Craftsman Gala. Lodging and transportation are not included. (See optional lodging information below.)

### Sponsor Level

**\$575 per person (includes Member Day and one Sponsor Ticket to the Gala)**

**\$1150 per couple (includes Member Day and two Sponsor Tickets to the Gala)**

### Benefactor Level

**\$1,050 per person (includes Member Day and one Benefactor Ticket to the Gala)**

**\$2,100 per couple (includes Member Day and two Benefactor Tickets to the Gala)**

To register,  
visit [StickleyMuseum.org](http://StickleyMuseum.org)  
or call 973-540-0311

## OPTIONAL LODGING FOR OUT-OF-TOWN ATTENDEES

The Stickley Museum has booked a room block at the 4-star Westin Governor Morris, Morristown, NJ, an easy 15-20 minute drive to the museum and the Mountain Lakes Club. Named for Lewis Morris, who became Royal Governor of the province of New Jersey in 1738, this sophisticated hotel is home to the Blue Morel Restaurant and Wine Bar.

Start Date: Friday, October 6, 2023 - End Date: Sunday, October 8, 2023

**Last Day to Book: Friday, September 15, 2023**

The Westin Governor Morris, Morristown, NJ for \$189 - \$289 per night. Call 888-627-8419 for reservations.

# THE 2022 CRAFTSMAN GUILD

January 1 to December 31, 2022

We are grateful to the members of the 2022 CRAFTSMAN GUILD whose generous support made a significant impact on the operations of the Stickley Museum at Craftsman Farms over the past twelve months.

## **LEADERSHIP CIRCLE (\$500,000+)**

Barbara A. Weiskittel

## **PATRON CIRCLE (\$50,000+)**

Barbara Nitchie Fuldner

## **PRESIDENT'S CIRCLE (\$20,000+)**

Thomas Bird

Crab Tree Farm Foundation

Theodore M. Lytwyn

Catherine J. Mathis and Robert C. Burchell

William A. Stout

## **DIRECTOR'S CIRCLE (\$10,000+)**

Drs. Amparo and Mitchell Coddling

Karin Janik

Leigh Ann and Bruce E. Johnson

Drs. Cynthia and Timothy McGinn

Merck Foundation

## **BENEFACTOR (\$5000+)**

Dianne Ayres and Timothy Hansen

Ellen and Jeffrey Cohen

Nancy Leonard Hunt and Raymond G. Hunt

Dr. Je' and Michael McCracken

Rago/Wright/LAMA/Toomey & Co

Laura D. and Guy Russell

Nancy and Davey Willans

## **MASTER (\$2500+)**

Jan and Terry Bender

Vonda L. Breed

Susan and David Cathers

Ula Ilnytzky and Raymond F. Stubblebine

Johanna and David Musselman

Jill Thomas-Clark

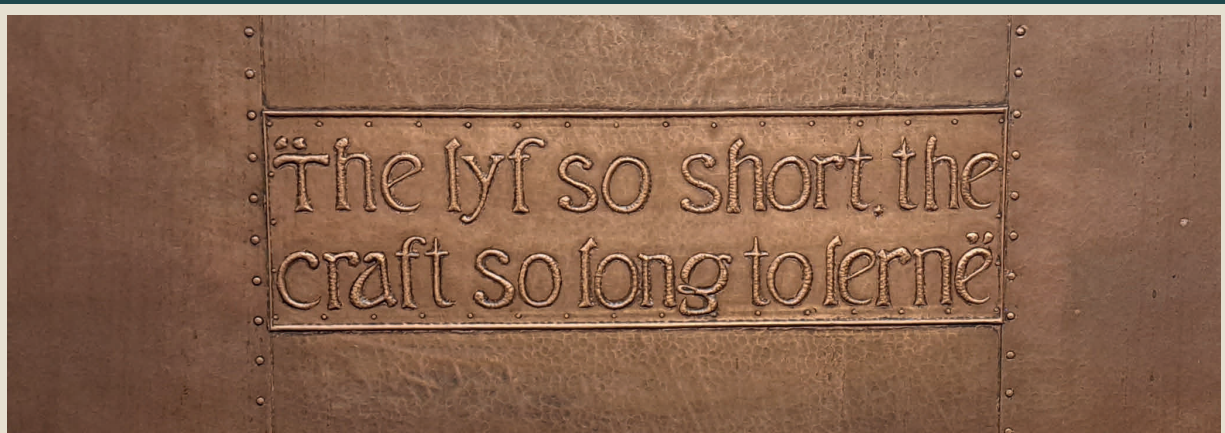
# THE 2022 CRAFTSMAN GUILD

## ARTISAN (\$1000+)

Anonymous  
Nancy Stickley Calderwood and  
Dr. Stephen Calderwood  
Sandra Cherniack  
Elizabeth B. Clarke  
Dr. Donald Davidoff  
Robert Delap  
Ulysses Dietz  
Fredericka M. Flynt  
Janet Fox  
Kristine George  
Louis Glesmann, III  
HMR Architects  
Jasmine Lim and John Caldwell  
Dr. Neil Macy  
Victor Maisano  
Mary B. McWilliams  
Brad E. Muniz  
Barbara Pitney Long  
Karen Plastoris  
Renee Redman and Mark E. Weaver  
Patricia Sepulveda-Giebfried and  
Frank Giebfried  
Amy Shook-Perez and Simon Perez  
Tori Simms and Raymond W. Hofmann  
Joyce Strand  
Jacqueline Strigl  
The Aspen Grove Foundation  
The District at 1515  
Thomas Van Decker  
Marti Weinstein  
Anne Wright Wilson  
JoAnn Young

## JOURNEYMAN (\$500+)

Alexandria Arnold and John Haigh  
Janice M. Ballou  
Joan Bartoli  
Benevity Causes  
Julie Bensley  
Terry Bible  
Margaret Booth  
Mark Davis  
Susan and Frank Finkenberg  
Gustav Fuldner  
Spenser Genesy and Evan Rossmann  
Vicki Giles  
Vonda K. Givens and James W. Sherman  
Lori and Donald Hafner  
Dr. Lisa M. Koenigsberg  
Michelle LaConto Munn and Eric Munn  
Lynn and Stanley Leeb  
Mary Ellen Lenahan and Paul Clarke  
David W. Lowden  
Anne Miller  
Barbara and Robert E. Nickerson  
Julia Peterson  
Laura and Richard Reilly  
Thomas A. Repasch  
Andrea and Michael Scharff  
Diane and Alan Tenenbaum  
Jill Totenberg  
Velma Willams-Gates



# 2022 TRIBUTE GIFTS

(JANUARY 1 TO DECEMBER 31, 2022)

## We are grateful for Gifts in Honor of:

**Barbara Nitchie Fuldner** by  
Jean and Charles Gorham

**Vonda Givens** by  
Heather and Rev. Douglas Stivison

**Catherine J. Mathis and Robert C. Burchell** by  
Margaret Booth  
Patricia Halstead  
Jill Totenberg

**Kristen McCauley** by  
Dr. Neil Macy

**Mark E. Weaver** by  
Cynthia Redman  
Melanie Redman

**Barbara A. Weiskittel** by  
Nilo Cater  
Jane and Carl Weiskittel, Jr.

## We are grateful for Gifts in Memory of:

**Thomas Bird** by  
Barbara Nitchie Fuldner  
Vonda K. Givens and James W. Sherman  
Theodore M. Lytwyn  
Barbara A. Weiskittel

**Allen A. Breed** by  
Vonda Breed

**Paul E. Duchscherer** by  
Don Merrill

**Casey Humphrey** by  
John Humphrey

**Pat Perlette** by  
Sharon Woodard

**Carl Weiskittel** by  
Thomas Bird  
Nancy Stickley Calderwood and  
Dr. Stephen Calderwood  
Drs. Amparo and Mitchell Coddling  
Vonda K. Givens and James W. Sherman  
Jasmine Lim and John Caldwell  
Theodore M. Lytwyn  
Drs. Cynthia and Timothy McGinn  
Johanna and David Musselman  
Patricia Sepulveda-Giebfried  
and Frank Giebfried  
Jill Thomas-Clark  
Marti and Gerald Weinstein  
Barbara A. Weiskittel  
Nancy and Davey Willans

**Paul Young** by  
JoAnn Young



## 2022 GRANTS

**The museum is grateful to the Township of Parsippany-Troy Hills, owner of the property and the museum's partner in preservation, and to the following grantors for their generous funding and support:**

\$3,600: Small Business Grant for Covid Relief from the Morris County Board of County Commissioners

\$5,000: Discover NJ History License Plate Fund grant for an entrance sign from the NJ Historic Trust

\$35,600: Morris County Historic Preservation Trust grant for restoration of the Log House fireplaces.

\$62,995: General Operating Support grant from the NJ Historical Commission

\$150,000: Preserve NJ Historic Preservation Fund grant from the NJ Historic Trust for Phase II Stabilization of the White Cottage

\$750,000: Preserve NJ Historic Preservation Fund grant from the NJ Historic Trust for the Rehabilitation of the Annex & Restoration of the Log House Kitchen

## NEW ENDOWMENT ESTABLISHED



In 2022, longtime Board of Trustees President Barbara Weiskittel established a new endowment to benefit the daily work of the Stickley Museum at Craftsman Farms and to underwrite the museum's annual operational expenses—specifically the salary of the executive director. In her own words about the establishment of the Executive Director Endowment, Barbara notes:

"The Stickley Museum at Craftsman Farms is a special place. Not just for me, but for many. . . . The strength of this organization comes from its leadership. It was with this in mind that the funds were given—to provide both current and future support for the Executive Director, thus facilitating the continuation of strong leadership and fulfillment of our mission. I look forward to others joining me in this endeavor."

The endowment, which was established by Barbara with a gift of \$500,000, was envisioned to secure the continuing health, stability, and strength of the museum for generations to come. This principal balance will be invested and held in perpetuity. Investment income that exceeds this minimum balance will be available annually to underwrite the Executive Director's salary.

Museum supporters are invited to support the Executive Director Endowment. To direct gifts to the endowment, please call 973-540-0311 or make a donation at [StickleyMuseum.org/support/donate](https://StickleyMuseum.org/support/donate).

## HIGHLIGHTS OF RECENT COLLECTIONS ACQUISITIONS



Left: Onondaga Pottery Co., plate from The Craftsman Restaurant, 1913;

Middle: James and Ralph Clews, plate (America and Independence), ca. 1818-34;

Right: Edward Colonna (des.) for Gérard, Dufraissex & Abbot, plate in the "Canton" pattern, ca. 1898-1902.

# PRESERVATION UPDATE

BY JONATHAN CLANCY, DIRECTOR OF COLLECTIONS & PRESERVATION

Preservation of the property's structures remains a critical part of the museum's mission and is an area that has seen significant progress during the last calendar year. If our prolonged closure has an upside, it is that preservation work proceeds with limited disruption to visitors.

One long-overdue project we completed this year was the conservation of the Log House's five distinctive fireplace hoods. The project's goals were to improve the aesthetic condition of the hoods and address serious deficiencies with the original mounting scheme that was causing separation from the hearths. **With funding from the Morris County Historic Preservation Trust Fund and a generous gift in memory of Vykki Mende Gray**, the hoods were sent to Krielick Conservation for cleaning and analysis. There, years of paint splatter, corrosion, cleaning residue, and a hazy varnish layer were safely removed resulting in hoods that are stable, legible, and better reflect their aesthetic during Stickley's residence from 1911 to 1917.

In consultation with HMR Architects and Nickles Contracting, we were able to devise a mounting system that is essentially invisible to audiences but that will ensure the safety and proper position of the hoods for decades to come. The hoods are—for the first time in nearly a century—free of paint, devoid of any active corrosion, and demonstrate the subtle glow and exquisite hammering of Stickley's time.

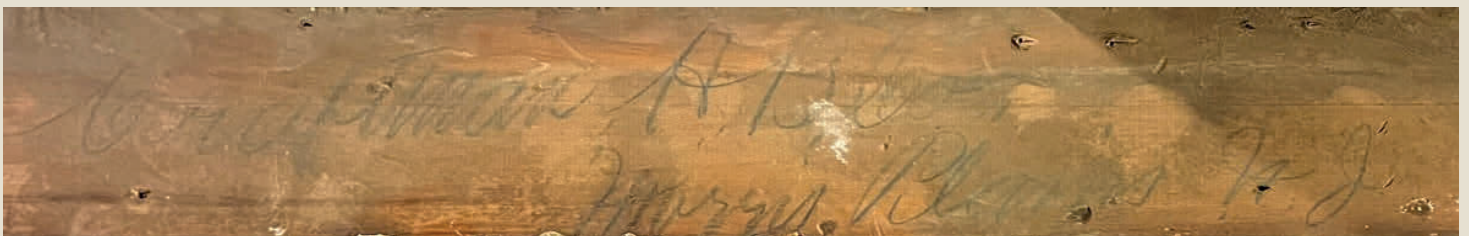
Additionally, we completed a study and treatment proposal for the log ends at the exterior southwest corner of the dining room and have applied to the Morris County Historic Preservation Trust Fund to address work in that area. More than a century of changing seasons and exposure to the elements have contributed to the accelerated degradation of these ends, and we hope to begin the process of selective consolidation and replacement shortly after the Annex is completed. The repair of these ends also will allow us to evaluate a modern approach to adhering the mortar between the logs, which will guide future preservation efforts. The preservation work we undertake ensures that we leave the property in better shape than when we arrived, with the goal of preserving this original character for future generations to experience.



The Girls' Bedroom fireplace after de-installation of the hood in preparation for conservation efforts.



In 2021, with funding from the New Jersey Historic Trust and the Township of Parsippany-Troy Hills, we completed phase one of stabilizing the White Cottage (at left) and returning it to its appearance during Stickley's residence. The second-story and rear addition, as well as enlarged rooms and a rear porch added during the Farny period, were removed and a new roof was installed. Matching funds for the second phase of work—which includes climate control for the building, stucco work and the replacement of missing windows and doors—have been secured, thanks to a grant from the New Jersey Historic Trust. With phase one completed and the building's envelope secure, we were able to turn our efforts and attention to the more pressing need of the Annex rebuilding and Kitchen restoration.



A piece of trim signed *Craftsman H. B. Co. / Morris Plains*, found during the restoration process.

Lastly, while reconstruction of the Annex (below) is the most visible sign of preservation on the property, the work in the Kitchen is most relevant to our preservation efforts. The project aims to restore the Kitchen to its configuration during Stickley's time and this process continues to yield valuable insights. From finding a piece of trim signed *Craftsman H. B. Co. / Morris Plains*, (opposite page, bottom) to recovering the original access panel door above the ceiling, to uncovering the original location the massive stove's vent pipes, we continue to learn about the property throughout this process. Most recently—and excitingly—we were able to safely remove numerous paint layers from original kitchen doors to find that the green stain Stickley used was largely intact (if somewhat faded) on a number of these doors. The transformation of the kitchen will allow audiences to better understand the property and offer new insights into Stickley's plans for Craftsman Farms.



## 2022 GIFTS TO THE MUSEUM'S COLLECTIONS AND TO THE STICKLEY MUSEUM LIBRARY

(JANUARY 1 TO DECEMBER 31, 2022)

**We are grateful for donations to the Collections of the  
Stickley Museum at Craftsman Farms from the following:**

Mary and James Authors  
Gus Bostrom  
Barbara Nitchie Fuldner  
Bonnie Kramer  
Drs. Cindy and Tim McGinn  
Tori Simms  
Bruce Szopo

**We are grateful for donations to the  
Stickley Museum Library from the  
following donors:**

Bob Archibald  
Hugh Barton  
Thomas Bird  
Mitchell Coddling  
Barbara Nitchie Fuldner  
David W. Lowden  
Michael McCracken  
Frederic Rabel  
RIT Press  
David Schloerb  
Tori Simms  
Juliarose Triebes  
Joan Patricia Wade



2352 Route 10 West  
Morris Plains, New Jersey 07950

973.540.0311  
info@stickleymuseum.org  
www.StickleyMuseum.org

**Return Service Requested**

Non Profit  
Organization  
U.S. Postage  
PAID  
Caldwell, NJ  
Permit No. 1003



## Inside: A Stickley Museum at Craftsman Farms Fall Preview + the 2022 Craftsman Guild List

The Stickley Museum at Craftsman Farms is under construction but tours are available on some weekdays and every weekend. Check our website for full details and to schedule a tour. And stay tuned for news about the museum's full re-opening in 2023!



@StickleyMuseum



@StickleyMuseum  
AtCraftsmanFarms

## Are you on our eblast list?

For the most up-to-date news from the Stickley Museum at Craftsman Farms, add your email address to our contact list by emailing [info@stickleymuseum.org](mailto:info@stickleymuseum.org).

Craftsman Farms, the former home of noted designer Gustav Stickley, is owned by the Township of Parsippany-Troy Hills and is operated by The Stickley Museum at Craftsman Farms, Inc., ("SMCF") (formerly known as The Craftsman Farms Foundation, Inc.). SMCF is a 501(c)(3) not-for-profit organization incorporated in the State of New Jersey. Restoration of the National Historic Landmark, Craftsman Farms, is made possible, in part, by a Save America's Treasures Grant administered by the National Parks Service, Department of the Interior, and by support from the Morris County Historic Preservation Trust, The New Jersey Historic Trust, and individual donors. SMCF received an operating support grant from the New Jersey Historical Commission, a division of the Department of State, and a grant from the New Jersey Arts and Culture Recovery Fund of the Princeton Area Community Foundation. Educational programs are funded, in part, by grants from the Arts & Crafts Research Fund.

