

## Campaign to Furnish the Annex and Log House Kitchen



A Letter from the Stickley Museum at Craftsman Farms



Dear Friends,

We're writing to ask for your support of our **Campaign to Furnish the Annex and the Log House Kitchen.**

Construction to rebuild the Annex and restore the kitchen began in June and as work continues, we are looking ahead to fully re-opening the museum in 2023.

With your help, when we re-open, our visitors will see a transformed property with a beautifully furnished Annex Visitor Pavilion and meticulously restored Log House kitchen.

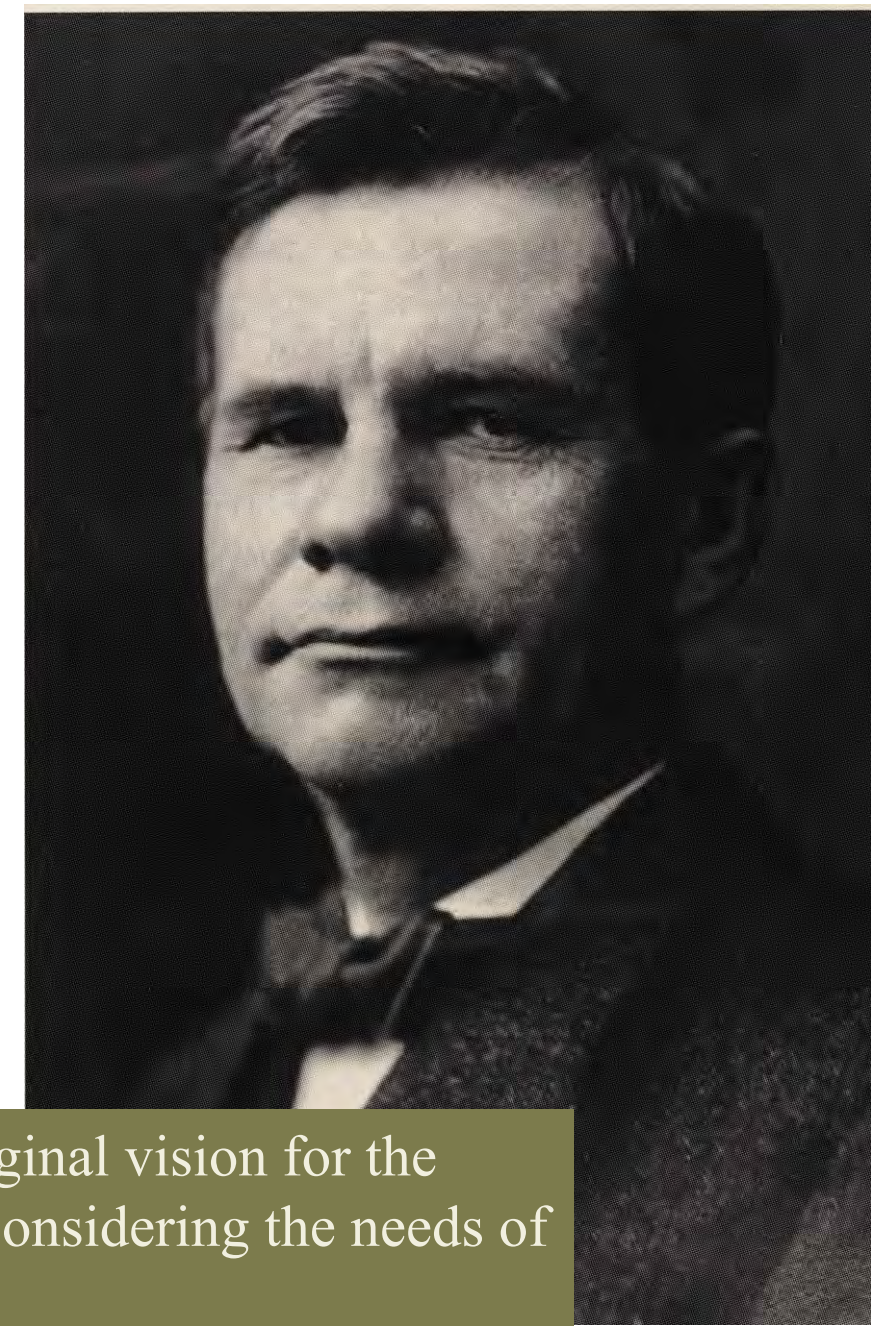


In August 2020, after Tropical Storm Isaias crushed the Annex, we knew we would rebuild, but it was hard to imagine how or when. As we undertook emergency recovery, planning for rebuilding also began.





Taking on a new capital project, after recently completing the Education Center and only months into the pandemic, was a challenge, but with the help of longtime friends, a committed board, and the support of the Township of Parsippany-Troy Hills, the owner of the property and our partner in preservation, we forged ahead.



In our planning we worked to honor Gustav Stickley's original vision for the property and the history of the building itself, while also considering the needs of visitors and of a growing museum.

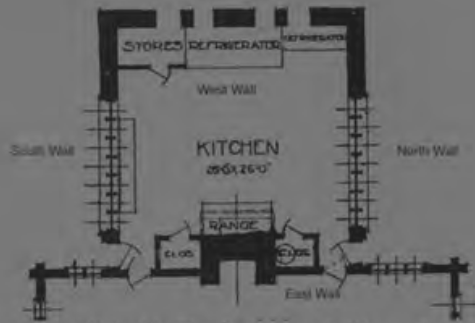


Fig. 1: Plan of the kitchen as published in *The Craftsman* in November 1911. Note the symmetry of the space and that both of the closets along the east wall have doors. Based on the presence of original plumbing in the north closet, the round form shown there, and evidence of pipe connections on that side of the range, it seems as though the water heater for the house was originally located in this space.

#### Physical Evidence of the Interior Spaces of the Kitchen:

For the first time since the Log House has become a museum, we have been able to analyze the material used in the space. Because the surfaces have been extensively altered between Stickley's departure in 1917 and the creation of the museum, a material analysis allows us to better contextualize and think about a space for which little period documentation survives.

The following report documents what we discovered about the kitchen from the late summer of 2020 to the spring of 2021. It is organized by wall / surface / feature and proceeds from top



Fig. 2: A view of a board in the original opening access opening in the ceiling below the cupola. Note the shadow line on the top of this board and the manner in which the subsequent coats of green, red, and other layers do not fully cross that threshold. That shadow line is consistent

With the museum closed, we also began a comprehensive study of the Log House Kitchen—a first step toward restoration. In time, the Annex project and the Log House Kitchen restoration were brought together.

ceiling line show the same layers of paint found on the trim in the kitchen. There is no likely scenario—it is in fact difficult to imagine any circumstances—in which the Farny family was painting trim above the ceiling line with multiple coats of paint to match the trim below. This suggests that not only that the opening was visible, but that it was recessed and had a door at

This expanded Annex and Kitchen project was presented to the Township of Parsippany-Troy Hills. It was received with overwhelming support. The Township agreed to provide half of the anticipated \$1.5 million budget, if the museum found a match to their funds.



We applied for a grant to the New Jersey Historic Trust —with 21 letters of support—and last September were awarded a capital preservation grant of \$750,000 from the Preserve New Jersey Historic Preservation Fund.







Now, with funding in place and construction beginning, it is time to shift our priorities—to the furnishing, care, and maintenance of the Annex and the Log House kitchen.

This project will have a transformative impact across Craftsman Farms. After construction, we want to re-open in the strongest way possible, with furnished buildings that reflect our careful stewardship of Craftsman Farms and our commitment to ensuring Stickley's beloved home will inspire generations to come.

You can help us do that by supporting our  
**Campaign to Furnish the Annex and the Log House Kitchen**

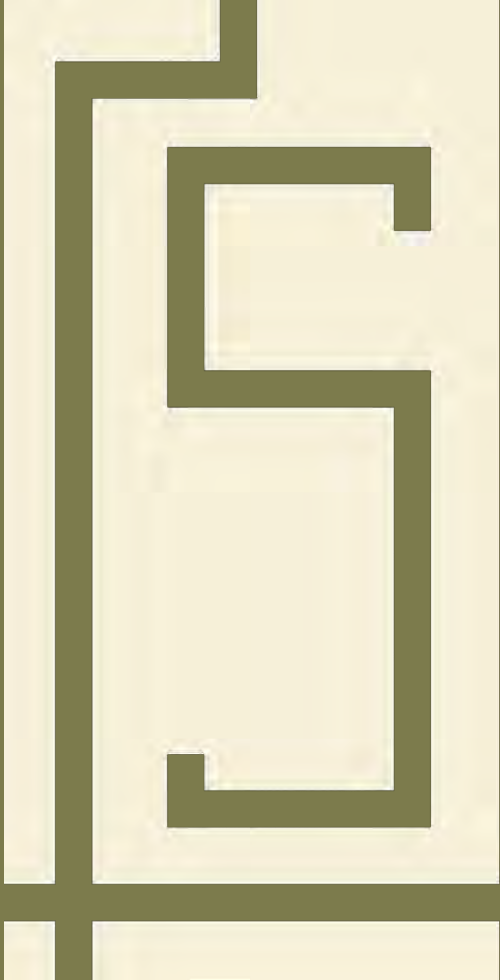




Drawing by Pete Mars

Your gift to this campaign will help the museum:

- furnish and interpret the restored Log House kitchen
- provide visitor amenities, such as added seating and A/V equipment for a pre-tour introductory video.
- provide fixtures and furnishings for The Craftsman Shop
- support future maintenance, ensuring that both buildings are well-cared for and visitor ready.



In closing, we thank you for being a friend to the Stickley Museum. To share your support for the Furnishings Campaign, simply [CLICK HERE](#) to return to the donate button on the campaign webpage.

Or complete the pledge form at this link: <https://www.stickleymuseum.org/wp-content/uploads/kitchen-annex-pledge-form-6-2022-v2.pdf>

Completed forms may be emailed to [barena@stickleymuseum.org](mailto:barena@stickleymuseum.org) or mailed to the museum at 2352 State Route 10, Morris Plains, NJ 07950

Please direct questions about this campaign to Vonda Givens, Executive Director, at 973-540-0311.

With Appreciation,

The Stickley Museum at Craftsman Farms



# The Stickley Museum at Craftsman Farms

2352 State Route 10, Morris Plains, NJ 07950

The Stickley Museum at Craftsman Farms is a 501(c)(3) not-for-profit organization entrusted with oversight of the preservation, interpretation and daily operation of Craftsman Farms, the early 20th-century country estate of Gustav Stickley. The museum works in partnership with the Township of Parsippany-Troy Hills, which owns the site and rescued the property from private development in 1989, putting it on a path to public use.

Craftsman Farms, the former home of noted designer Gustav Stickley, is owned by the Township of Parsippany-Troy Hills and is operated by The Stickley Museum at Craftsman Farms, Inc., (“SMCF”) (formerly known as The Craftsman Farms Foundation, Inc.). SMCF is a 501(c)(3) not-for-profit organization incorporated in the State of New Jersey. Restoration of the National Historic Landmark, Craftsman Farms, is made possible, in part, by a Save America’s Treasures Grant administered by the National Parks Service, Department of the Interior, and by support from the Morris County Historic Preservation Trust, The New Jersey Historic Trust, and individual donors. SMCF received an operating support grant from the New Jersey Historical Commission, a division of the Department of State, and a grant from the New Jersey Arts & Culture Recovery Fund of the Princeton Area Community Foundation. Educational programs are funded, in part, by grants from the Arts & Crafts Research Fund.